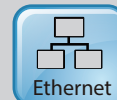


A Fast & High-Volume Production Scanner



Features:

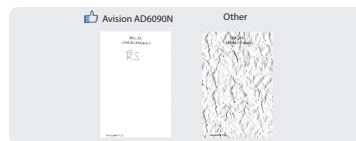
- Fast, 90 ppm / 180 ipm scanning in color, grayscale and monochrome (300 dpi)
- Support document up to A3 size (308 x 432 mm)
- Robust 150-page automatic document feeder
- Daily duty cycle of up to 25,000 sheets
- Auto crop and deskew a document with the advanced image processing unit to enhance the scanning speed
- Latest USB 3.2 Gen1x1 connectivity for faster transmission speed
- Reverse roller technology delivers outstanding feeding reliability
- Hard and embossed card scanning up to 1.25 mm in thickness in landscape feeding
- Press and scan to cloud servers via the bundled software Button Manager V2
- Earth-friendly LED technology
- Long page scanning up to 6096 mm (240")

A New Generation of A3 Production Scanner

Avision is pleased to announce its release of the high-volume document scanner with a robust 150-page auto document feeder and a blazing scanning speed of up to 90 pages per minute in Color, Grayscale, and Monochrome. Combining the ultrasonic double-feed detection capability, the AD6090N delivers exceptional feeding reliability to maximize your scanning productivity in a small unit.

Dual-lamp Design to Handle Wrinkled Documents

Designed to handle even extreme applications, the AD6090N scanner is built-in with two long-lasting lamps. These mercury-free lamps give you maximum illumination to help eliminate shadows from wrinkled documents.



Long Document Scanning

The AD6090N provides you a convenient feature to scan long-page document up to 240" (609 cm). This is a cost and time-saving solution for insurance company and healthcare institutions that need to digitize insurance bills and patient's records.

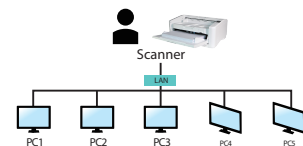
Plastic card or ID card uses the straight paper path

To provide scanner users with the most versatile scanning environments, the user has the choice to utilize a "U-Turn or Straight Paper Path". By opening the rear cover, users can use the straight path to transport paper direct to the rear of the unit. To utilize the straight paper path ensures high reliability with plastic card, ID card, thick, long paper, or more fragile documents.



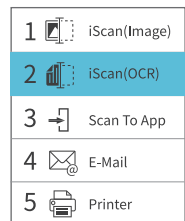
A wired network scanner

After connecting to the LAN through the ethernet cable, install Avision's Network setup tool - Virtual Scanner Link software to find and connect the scanner on the LAN. Then you can start a scan either from your computer directly on the scanner's button. What is best, the network scanner allows you to switch to other computers in the LAN conveniently. Users in the LAN can really enjoy the scan and collect the image on their own computers!



1.77" LCD Display

The AD6090N is easy to use through the clear 1.77" LCD display. By selecting your destination and pressing the "Scan" button, the scan can be done and the scanned image can be sent to your specified destination application such as e-mail, printer, or your favorable image-editing software application. Up to nine frequently used scan settings and destinations can be preset for different scanning needs.



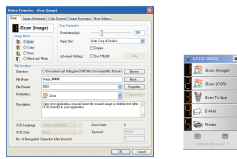
What We Have Bundled

The AD6090N comes with TWAIN and ISIS drivers, and are bundled with a suite of powerful software applications that include Avision Button Manager V2, AVScan X and Virtual Scanner Link .

AD6090N Production Scanner

Avison's Button Manager V2

-Completes your scan with a single step

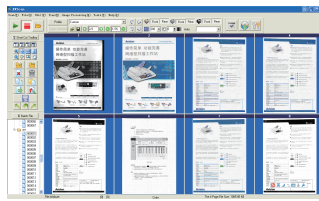


The Button Manager V2 main screen

Button Manager V2 makes it easy for you to scan and send your image to your favorite destinations with a press one button. Now the new version comes with an innovative feature to let you scan and automatically upload the scanned document to popular cloud repositories such as Google Docs, Microsoft SharePoint, or FTP. In addition, the iScan feature allows you to insert the scanned image or recognized text after optional OCR (Optical Character Recognition) process to your text editor such as Microsoft Word to get your job done easily and quickly.

AVScan X

-The Intelligent Document Management Tool

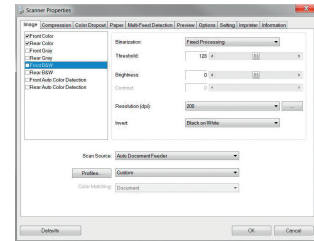


The AVScan X main screen

Document Imaging is the very first step of Document Management. However, poor quality images can cause serious problems to later indexing or storing processes. It may increase scanning labor costs and lowers the OCR accuracy. AVScan X ensures all documents are checked and polished at the time they are scanned such that the image quality is guaranteed before they are ready to use for other purposes.

AVScan X is an intelligent scanning and electronic filing solution. AVScan X possesses distinct features that convert and index scanned information into electronic documents for easy storage and fast retrieval.

Avison TWAIN Driver



Avison's easy-to-use TWAIN driver provides various useful features such as auto color detection, color matching, multi-feed detection, and blank page removal to enhance your image quality and improve your productivity.



Avison AD6090N Specifications

Paper Feeding:	ADF 150-page capacity
Scanning Technology:	CMOS-CIS
Light Source:	LED
Card Scan:	Up to 1.44 mm ^{*1}
Long Page Mode:	6096 mm (240 in.)
Document size (ADF):	Min. (Single-pages): 50 x 65 mm (2 x 2.5 in.) Min. (Multi-pages): 50 x 85 mm (2 x 3.3 in.) Max. : 308 x 432 mm (12.15 x 17 in.)
ADF Scanning Speed:	90 PPM/ 180 IPM (color, A4, 300 dpi.)
Paper Thickness:	U-Turn Path: 40~210 g/m ² (10.6~56 lb.) Straight Path: 40~413 g/m ² (10.6~110 lb.)
Optical Resolution:	600 dpi
Output Resolution:	75, 100, 150, 200, 300, 400, 600 and 1200 dpi
Output Formats:	B/W, greyscale, 24-bit color
File Formats:	BMP, PNG, GIF, JPEG, PDF, Searchable PDF Multi-Page TIFF, TIFF, RTF, TXT, XPS, DOC, XLS, PPT, DOCX, XLSX, PPTX, HTML.
Interface/Drivers:	USB3.2 Gen1x1/ TWAIN , ISIS
Network connection:	RJ-45 Ethernet 10/100/1000 Mb
Power Supply:	Input: AC 100-240V, 2A, 50-60Hz; Output: DC 24V/ 6.25A
Power Consumption:	Operating: 48 W Ready: 14 W Sleep: 3.1 W Off: 0.2 W
Environmental Factors:	Operating temperature: 10°C to 35°C (50°F to 95°F) Operating relative humidity: 10% to 85%
Acoustic Noise:	Ready: <25 dB Operating: <58 dB
Dimensions (W x D x H):	Max. 460 x 680 x 198 mm (18.1 x 26.7 x 7.7in.) Min. 460 x 310 x 198 mm (18.1 x 12.2x 7.7in.)
Weight:	12 kg (26.4 lb.)
Recommended Daily Scanning Volume:	Up to 25,000 sheets
Multi-feed Detection:	Ultrasonic Sensor

*1 Supports name cards thickness up to 1.44 mm

We have endeavored to ensure that the information in this manual is accurate and that Avison is not responsible for printing or typographical errors. The actual product may vary from the information in this manual. Avison Inc. owns the intellectual property rights of the product artwork and design and the product artwork and design are subject to change. Avison reserves the right to the interpretation of the product description. Avison, Inc. All rights reserved. Other company and product names mentioned in this document are trademarks of their respective companies. Wherein the third party product is for reference only and Avison does not warrant these products nor is responsible for the efficiency or use of these products.

System Requirements

CPU:	Intel® Core i3 (2.1GHz) or Higher
Memory:	2GB (32bit Windows) 4GB (64bit Windows)
USB:	USB3.2 Gen 1x1 port
Windows® Operating System:	- Windows® 11,10, 8, 7
Linux Operating System:	- Fedora, openSUSE, Debian, Ubuntu
MAC Operating System:	- macOS10.12~10.15, macOS11 Big Sur, macOS12 Monterey, macOS13 Ventura, macOS14 Sonoma, macOS15 Sequoia

Contents

Scanner, Power Supply, Quick Guide, USB3.2 Gen 1x1 cable

Bundled software:

- Scanner Driver
- (* TWAIN/ ISIS / Mac/ * Linux Driver)
- * Avison Button Manager V2
- * Avison AVScan X
- * Nuance PaperPort SE 14
- * Virtual Scanner Link
- * [Download and run \[Avison Update\] at www.avision.com/install](#)
- * [Download and run \[Avison Update\] at www.avision.com/download](#)



Avison
www.avision.com